

1. Package Contents



2. Hardware Installation

2-1 Installing the Fiddlehead Card

- step 1** Unplug the computer to be sure it is off and then remove the computer cover
- step 2** Insert the Fiddlehead card into the PCI card slot and tighten the screw
- step 3** Replace the computer cover



2-2 Connect Monitors to Fiddlehead

- step 1** Plug the 4 headed cable adapter into Fiddlehead Card
- step 2** Plug monitors into each connector of the 4-headed cable adapter
- step 3** Plug monitors into power outlets

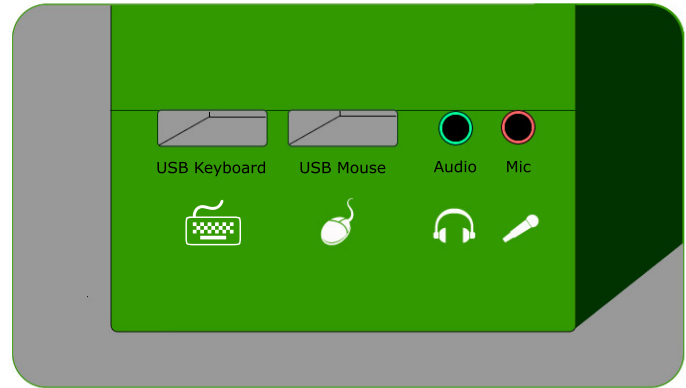


2-3 Connect Fiddlehead to Host PC

- step 1** Plug USB cable into host PC
- step 2** Plug the other end of the USB cable into one Fiddlehead cube
- step 3** Plug Fiddlehead cube into AC power outlet
- step 4** Repeat this step for both Fiddlehead cubes



2-4 Connect Peripherals to Fiddlehead



- step 1** Plug keyboards, mice, and audio devices into Fiddlehead cubes. One cube shares two users.

3. Software Installation

- step 1** Make sure PC is set to boot from a USB device (see PC hardware manufacturer for details).
- step 2** Install the Fiddlehead software and configure the base system (see the other side of this Quick Installation Guide).
- step 3** Install operating systems (see the other side of this Quick Installation Guide).

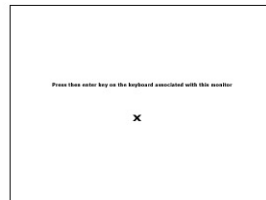
Installation of Fiddlehead Host System

- 1 Make sure your PC is set to boot from the USB hubs
(Consult the PC manufacturer for details.)
- 2 Power on the machine.
- 3 At the loading screen, press enter.
(Fiddlehead is set up to automatically configure the network for DHCP. If you have any of the following configurations, please consult the detailed Installation Instructions.)
 - No network
 - Static IP
 - An incompatible network card (consult the detailed Installation Instructions).
- 4 The PC will automatically reboot at the end of installation.
- 5 Re-set your PC to use default boot setting



Setting Up User Stations

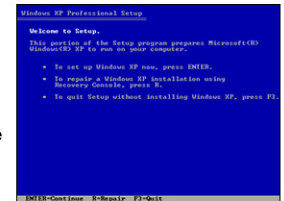
- 1 When prompted, press enter to link the first station to its keyboard.
- 2 When prompted, press the left mouse button to link the first station to its mouse.
- 3 Identify the first station with a number. This number does not need to be 1, but it is helpful to name 1 through 4 as you move from left to right.
- 4 Move the cursor to the next screen by moving the cursor off the right edge of the monitor.
- 5 When the cursor is on the next monitor, repeat steps 1-4. Continue moving the cursor to the right after each station setup, even if the next highlighted monitor is to the left.



Installation of Bundled Copy of XP on Station 1

Note: If you want to install you own OS, consult the detailed Installation Instructions.

- 1 Go to station 1 and click the Click Here to Start button.
- 2 Follow standard Windows prompts to install the Windows OS.
- 3 After following the prompts, Windows will automatically install additional components.
- 4 From Windows, install any additional software and configure desired settings before cloning.
- 5 Restart the host system.



Cloning Software to Other User Stations

- 1 From the main screen, log into Fiddlehead Management Console Login.
 - a. Type "admin" for username.
 - b. Type "admin" for password.
 - c. Press enter.
- 2 At the main menu, choose option 1: Clone Workstation.
- 3 Select your source station by typing "1" for the station Windows was just installed on.
- 4 Select your target station by typing in the next station to install an OS on, or by typing 5 to clone the station to all.
- 5 Cloning will now proceed.
- 6 Once cloning is complete, you will be returned to the main menu, and are now free to log into all stations from the Start the Fiddlehead Station screen.
- 7 It may be necessary to complete normal post-cloning procedures, such as renaming individual user stations, at this time.

